



Since 1975

General catalogue for metal E

INDEX

- 01 The location of CO.MA.FER. MACCHINE S.p.A.
- 03 A brief description of the history of CO.MA.FER. MACCHINE S.p.A.
- 04 Quality philosophy of CO.MA.FER. MACCHINE S.p.A.
- 05 The reason to buy a CO.MA.FER. product
- 06 Why briquetting metal chips
- 07 BRIQUETTING PRESSES METALPRESS
- 09 Briquetting press Metalpress 150
- 10 Briquetting press Metalpress 400
- 11 Briquetting press Metalpress 800
- 12 Accessories on demand for Briquetting presses
- 13 Complete plant
- 15 SHREDDERS METALTRITO
- 16 Shredder Metaltrito 40
- 17 Shredder Metaltrito 80
- 18 CONVEYOR BELTS
 - Conveyor belt IL-15
 - Conveyor belt IL-30
- 19 Conveyor belt IL-330/A
 - Conveyor belt IL-330/B
- 21 TECHNICAL DATA



In 2009 the location of CO.MA.FER. MACCHINE is renewed.



BRIEFLY ON THE HISTORY OF CO.MA.FER. MACCHINE S.p.A.

■ The origin of our company is in late 1975 from a brilliant idea of his founder and president, Mr. Luciano Peroni, with the production of the first series of briquetting presses.

The compression of the material waste has always been an ambitious studio and research for our company.

The brand new machines, fully technological and à l'avantgarde, show our never ending investments in the development and in the project along with a wise behaviour to learn from the past experience.

Thanks to the 15.000 machines sold in these years CO.MA.FER. has become leader in the world market with the same philosophy that led the company to the Quality certification ISO 9001:2008:

CO.MA.FER. wants to maintain a constant equilibrium between technology, high quality components and value for money.

In fact we have the ambition to believe the our aim goes beyond the project and the pure production of high quality machines.

QUALITY PHILOSOPHY OF CO.MA.FER. MACCHINE S.p.A.



■ CO.MA.FER. MACCHINE quality has always been considered a key element of its strategy and promote its commitment to all levels of the organization. For this reason, in 1999, the company relies on the most prestigious partner "SGS" the Quality Management System complying with UNI EN ISO 9001:2008 so as to obtain the coveted certification.

The never-ending research in quality plans and implements the activities, the training and updating of the entire staff according to objectives and targets defined and measurable for the appropriate levels of the organization.

It establishes the following priorities:

- Check the suppliers to maintain a good quality and delivery level according to the demands.
- Keep the machine assembly time by the set values.
- Guarantee the best quality in all components in order to achieve reliability, added value and durability.

Basing the decisions on the analysis of data and information CO.MA.FER. MACCHINE promotes a methodological approach focused on gathering the systematic data and their detailed analysis, planning corrective actions and improvements inside the organization.

The Quality Policy is regularly reviewed and revised when necessary to encourage its diffusion and understanding.

Aware of its role of leadership it supports the commitment to meet the requirements of the Quality Management System and continually improve its effectiveness.

THE REASON TO BUY A CO.MA.FER. PRODUCT

■ The reasons for a concrete success are never casual but the result of never-ending investments, technological development and business strategies.

The quality and technology cannot find any compromise.

The constant relationship with the most qualified suppliers, the mechanical components, the hydraulic and electrical systems are among the best that the market can offer: PARKER hoses (which bear four times the working pressure of the machines), PARKER gaskets, the hydraulic connections, the tightness of the hydraulic cylinders, CASAPPA pumps, VICKERS solenoid valves, BONFIGLIOLI gearmotors, MOTIVE electric motors, EATON electrical components and ROL-OIL oil assure a longer working life to our machines than those of our competitors.

Our ongoing commitment in the research and development is well characterized by the added value of our products together with the guarantee of a safe investment, a modern constructive design, an advanced technology, an established quality and an unquestioned reliability in the components.

Our wide range of machines is characterized by minimum dimensions, low operation costs and reduced maintenance. After the design phase each model is tested for durability and wear by means of over 20 specific controls so as to ensure the highest quality.

The appreciated value of our after-sales service is assured by highly qualified staff and a well-stocked and organized spare parts warehouse.

The importance of our activity is the Customer: we have always been trying to find a good compromise between the choice of the product and the quality of our services. Our cooperation with world-wide supplier is in this way very important.



WHY BRIQUETTING THE METAL CHIPS

■ The non-ferrous Metal briquettes offer important advantages in the volume reduction (1/5-1/10), in the logistics and transport; you can easily understand that the compaction of the chips and the volume reduction origin a considerable costs' cut with great advantages in handling and storage. During the melting phase the metal briquette significantly increases the output because of its better quality: unlike the simple chips that are directly exposed to the atmosphere and subject to oxidation, reduction and dross. The briquetted chips are "drier" as emulsified oils are almost completely separated during the compression phase, so as to be immediately loaded into the furnace while the wet chips need a pre-treatment. The briquettes are easily loaded into the furnace saving time and energy and high reduction of the risk of particle deposits on the walls of the furnace.

The advantages are numerous in the recovery of oils: the oils coming out during the pressing phase can be recovered and reused so as to reduce significantly the costs on processing oils.

Better security in the company: during the compaction of metal powders (such as magnesium and aluminum, etc..) the risk of auto-ignition and fire are avoided.

CO.MA.FER. MACCHINE provides, on demand, complete systems, starting from the shredding of the metal coils to the feeding systems of the briquetting presses by means of specific loading/unloading conveyors.

It 'interesting that the briquetted material has a very high specific, or about 80% of the original material.

We enclose a list of specific weight of the main metals.



Aluminum



Magnesium



Brass



Cast iron



Copper



Steel

Steel	7.8 - 7.9
Stainless steel	7.48 - 8
Rolled steel	7.85
Rolled aluminum	2.70 - 2.75
Fused aluminum	2.56 - 2.64
German silver	8.4 - 8.9
Argentana	8.4 - 8.9
Silver	10.49
Beryllium	1.84
Bronze (8-14% tin)	7.4 - 8.9
Phosphor Bronze	8.78 - 8.92
Aluminum bronze (3-10% Al)	7.7 - 8.7
Lead Bronze	8.8 - 9.5
Iron	7.85
Cast iron	6.8 - 7.8
Light alloys based on Mg	1.76 - 1.87
Light alloys based on Al	2.56 - 2.8
Mercury	13.6
Antifriction metal	9.3 - 10.6
White Metal	7.1
Delta metal	8.6
Molybdenum	10.2
Monel	8.36 - 8.84
Nickel	8.8
Gold	19.25
Brass castings	8.4 - 8.7
Rolled and drawn brass	8.43 - 8.73
Lead	11.34
Platinum	21.4
Copper	8.93
Beryllium Copper	8.1 - 8.25
Pond	7.28
Tungsten	19.1
Zinc	7.1

BRIQUETTING PRESSES METALPRESS

THE COMPONENTS THAT MAKE OUR EXCLUSIVE BRIQUETTING PRESSES



IP55 ELECTRICAL
CONTROL BOARDS
and Eaton electrical
and electronic components



EATON PLC
is the best on world market



DIGITAL THERMOFEELER



MOTIVE ELECTRICAL MOTOR
of high quality
and reliability



POWER DEVICE
projected with special
CO.MA.FER. techniques,
with Casappa double pump
and capacity change
to increase the pressures



NEW VICKERS/PARKER
DUPLOMATIC ELECTROVALVES
of excellent quality and reliability
with high capacities
and short exchange rates



AMPLIFIED CONNECTORS
to optimize the cycle
performances
of 800



PARKER HYDRAULIC HOSES
are the best on
the market and can bear
four times the working
pressure of the machines



BRIQUETTES' CYLINDERS
with Parker seals,
lapped housing
and screwed pistons have
the same constructive criteria
of the box cylinders



PROXIMITY SWITCHES
for 800



BULKHEAD CYLINDER



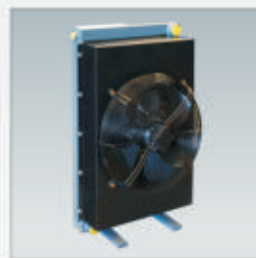
LIMIT SWITCH FOR BULKHEAD



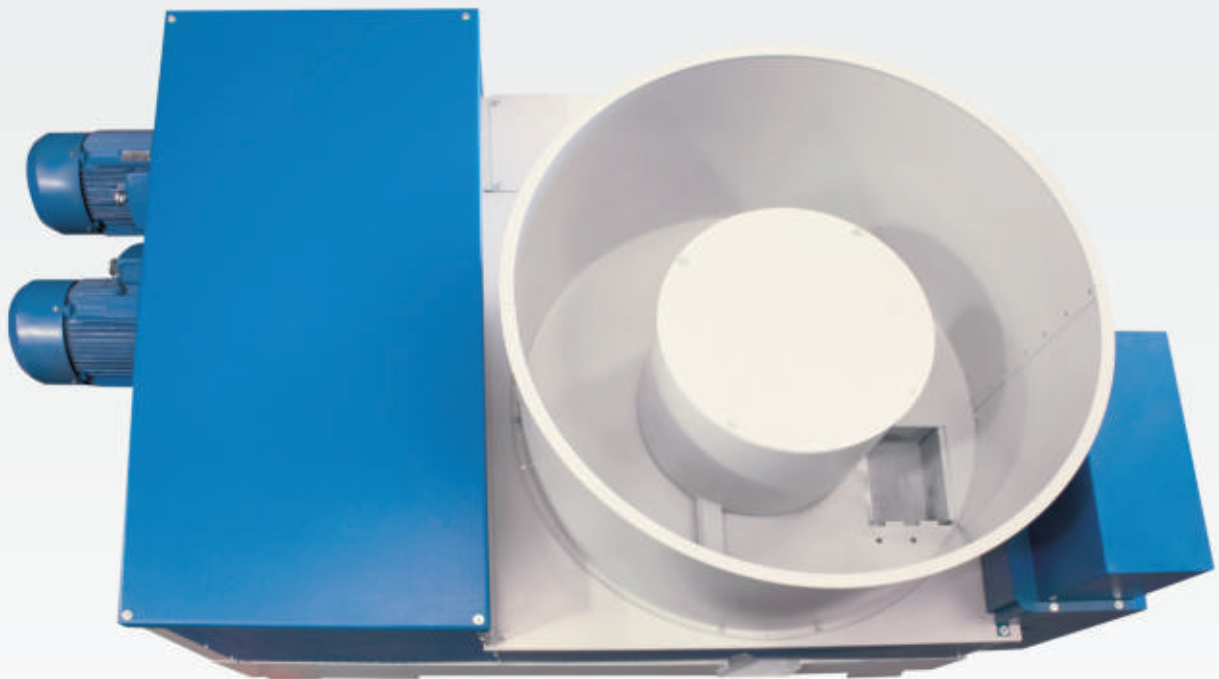
BOX CYLINDER ADJUSTMENT



AIR/OIL EXCHANGERS
with a radiating
aluminium structure,
a significant added value
to our machines
for 150-400



AIR/OIL EXCHANGER
with a radiating
aluminium structure,
a significant added value
to our machines
for 800



BRIQUETTING PRESS METALPRESS 150



■ This is the briquetting press apt to be installed in medium-big sized companies. Hydraulic briquetting press to press metal chips (Aluminium, Brass, Copper, Magnesium, Steel, Cast iron etc...) eventually to be grinded with 10-16mm screens, according to the material. Volume reduction: 1/4-1/10 (according to the specific weight of the material).

TECHNICAL CHARACTERISTICS:

- basement as oil tank (complete with oil level) composed of a rectangular sturdy steel welded and powder coated frame;
- loading plane composed by a hopper for the material and a steel cone mounted on its bottom to ensure the regular loading of the material in the adjustable box by means of an electric limit switch;
- IP55 electrical control board complete with PLC for an electronic control of the production process to optimize the production feeding system according to the type of the material to briquette and a digital thermofeeler for an electronic oil control;
- electric motor connected to the hydraulic pump to have pressure in the circuit;
- high quality and reliability electrovalves mounted directly at the rear of the press cylinder for a complete control of the hydraulic cycle;
- box cylinder pre-compresses the material inside the compression chamber through the loading plane;
- briquettes' cylinder to optimize the production rate. It compresses the material in the sleeve-bulkhead group;
- bulkhead cylinder to move the bulkhead vertically;
- sleeves and K100 piston rod apt to work at very high pressure;
- power device complete with double pump and pressure increasing device apt to compress all kinds of metal chips;
- closed circuit powerful air/oil exchanger to cool down the oil in the tank, eliminating the problem of the continuous water consumption and the possible limestone production. It improves overall performances by optimizing the cooling of the machine and allowing tangible savings in the maintenance.



BACK SIDE
New powerful
air/oil exchanger (standard)

BRIQUETTING PRESS METALPRESS 400



■ This is the briquetting press apt to be installed in medium-big sized companies. Hydraulic briquetting press to press metal chips (Aluminium, Brass, Copper, Magnesium, Steel, Cast iron etc...) eventually to be grinded with 10-16mm screens, according to the material. Volume reduction: 1/4-1/10 (according to the specific weight of the material).

TECHNICAL CHARACTERISTICS:

- basement as oil tank (complete with oil level) composed of a rectangular sturdy steel welded and powder coated frame;
- loading plane composed by a hopper for the material and a steel cone mounted on its bottom to ensure the regular loading of the material in the adjustable box by means of an electric limit switch;
- IP55 electrical control board complete with PLC for an electronic control of the production process to optimize the production feeding system according to the type of the material to briquette and a digital thermofeeler for an electronic oil control;
- electric motor connected to the hydraulic pump to have pressure in the circuit;
- high quality and reliability electrovalves mounted directly at the rear of the press cylinder for a complete control of the hydraulic cycle;
- electromagnetic proximity switches to reduce the exchanging time of the electrovalves;
- box cylinder pre-compresses the material inside the compression chamber through the loading plane;
- briquettes' cylinder to optimize the production rate. It compresses the material in the sleeve-bulkhead group;
- bulkhead cylinder to move the bulkhead vertically;
- sleeves and K100 piston rod apt to work at very high pressure;
- power device complete with double pump and pressure increasing device apt to compress all kinds of metal chips;
- closed circuit powerful air/oil exchanger to cool down the oil in the tank, eliminating the problem of the continuous water consumption and the possible limestone production. It improves overall performances by optimizing the cooling of the machine and allowing tangible savings in the maintenance.



BACK SIDE
New powerful
air/oil exchanger (standard)

BRIQUETTING PRESS METALPRESS 800



■ This is the TOP briquetting press apt to be installed in big sized industries. Hydraulic briquetting press to press metal chips (Aluminium, Brass, Copper, Magnesium, Steel, Cast iron etc...) eventually to be grinded with 10-16mm screens, according to the material. Volume reduction: 1/4-1/10 (according to the specific weight of the material). Feeding system with gearmotor.

TECHNICAL CHARACTERISTICS:

- basement as oil tank (complete with oil level) composed of a rectangular sturdy steel welded and powder coated frame;
- loading plane composed by a hopper for the material and a steel cone mounted on its bottom complete with a gearmotor whose turning ensures the regular loading of the material inside the adjustable box by means of an electric limit switch;
- IP55 electrical control board complete with PLC for an electronic control of the production process to optimize the production feeding system, a digital pressure gauge to adjust the hardness of the briquette electronically and a digital thermofeeler for an electronic oil control;
- two electric motors connected to the hydraulic pumps to have pressure in the circuit;
- high quality and reliability electrovalves complete with amplifiers connectors and security valve mounted directly at the rear of the press cylinder for a complete electronic control of the hydraulic cycle;
- electromagnetic proximity switches to reduce the exchanging time of the electrovalves;
- box cylinder pre-compresses the material inside the compression chamber through the loading plane;
- briquettes' cylinder to optimize the production rate. It compresses the material in the sleeve-bulkhead group;
- bulkhead cylinder to move the bulkhead vertically;
- sleeves and K100 piston rod apt to work at very high pressure;
- two power devices complete with double pump and pressure increasing device apt to compress all kinds of metal chips;
- closed circuit powerful air/oil exchanger to cool down the oil in the tank, eliminating the problem of the continuous water consumption and the possible limestone production. It improves overall performances by optimizing the cooling of the machine and allowing tangible savings in the maintenance;
- antifreezing system, mounted on the tank of the machine, is an electric resistance with thermofeeler.



BACK SIDE
New powerful
air/oil exchanger (standard)

ACCESSORIES ON DEMAND FOR THE BRIQUETTING PRESSES



**LEVEL FEELER
WITH PHOTOCELLS**
to be mounted in the chips'
container of the press.
It lets the machine work
and stop automatically
thanks to an stop
adjustable timer



INSPECTION DOOR
mounted in the chips'
container of the press.
It is made of a steel
hinged frame
complete with a viewer



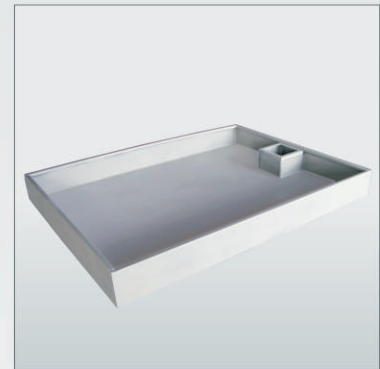
LUBRICATION UNIT
with three nozzles,
necessary for very material
for 150-400



LUBRICATION UNIT
with five nozzles,
necessary for very material
for 800



ANTIFREEZING DEVICE
to be mounted directly in the tank.
It is recommended for machines
installed outside.
It is composed by an electric resistance
with an adjustable thermofeeler
standard for 800
and on demand for 150-400



COLLECTING PAN FOR WATER/OIL
complete with level feeler



ELECTROPUMP FOR PAN
complete with electrical plant and timer







SHREDDERS METALTRITO

THE COMPONENTS THAT MAKE OUR EXCLUSIVE SHREDDERS



IP55
ELECTRICAL CONTROL BOARD



GEARMOTORS GROUP



LOADING HOPPER



STEEL SCREEN



STEEL BLADES' GROUP
complete with sharp-corners disks

SHREDDER METALTRITO 40



■ Medium sized multipurpose machine suitable for shredding an enormous number of waste materials-even very large. It can be introduced into a line to operate in continuous working.

TECHNICAL CHARACTERISTICS:

- very thick welded sheet steel support;
- base equipped with drawer connectable to the aspiration plant (wood sector) or no. 3 protection nets with frontal gate provided with security micro;
- electrowelded sheet metal hopper for front or top loading fitted with sliding cover and anti fly-back rubber protections;
- IP55 electrical control board equipped with PLC and torque limiting device which inverts the direction of the pusher drawer if the work load of the machine exceeds the set value.
Touch screen display to adjust all the parameters of the machine. Software prepared to control the loading system, the grinder and the suction plant. Emergency control functions for stopping the system. Maintenance programme for the ordinary maintenance interventions at their expiry date shown on the display;
- no.2 epicyclical reduction gears with rotation axes parallel to the cutter axis;
- supports for barrel roller bearings with sealing system against dust and liquids;
- anti-wear interchangeable side plates with separating interspaces of the cutting chamber from bearing-holder flanges;
- high thickness shafts with special anti-wear steel cutters and conveyor disks to facilitate gripping of bulky objects;
- graduated arrangement of cutter teeth for better taking and cut progress;
- drive system in oil bath with steel gears and pinions;
- interchangeable screen determining the sizes of the shredded material.

SHREDDER METALTRITO 80



■ Medium sized multipurpose machine suitable for shredding an enormous number of waste materials- even very large. It can be introduced into a line to operate in continuous working.

TECHNICAL CHARACTERISTICS:

- very thick welded sheet steel support;
- base equipped with drawer connectable to the aspiration plant (wood sector) or no. 3 protection nets with frontal gate provided with security micro;
- electrowelded sheet metal hopper for front or top loading fitted with sliding cover and anti fly-back rubber protections;
- IP55 electrical control board equipped with PLC and torque limiting device which inverts the direction of the pusher drawer if the work load of the machine exceeds the set value.
Touch screen display to adjust all the parameters of the machine. Software prepared to control the loading system, the grinder and the suction plant. Emergency control functions for stopping the system. Maintenance programme for the ordinary maintenance interventions at their expiry date shown on the display;
- no.2 epicyclical reduction gears with rotation axes parallel to the cutter axis;
- supports for barrel roller bearings with sealing system against dust and liquids;
- anti-wear interchangeable side plates with separating interspaces of the cutting chamber from bearing-holder flanges;
- high thickness shafts with special anti-wear steel cutters and conveyor disks to facilitate gripping of bulky objects;
- graduated arrangement of cutter teeth for better taking and cut progress;
- drive system in oil bath with steel gears and pinions;
- interchangeable screen determining the sizes of the shredded material.

CONVEYOR BELTS

CONVEYOR BELT IL-15 DISCHARGING THE BRIQUETTES



TECHNICAL CHARACTERISTICS:

- anodized Aluminium frame;
- zinc loading plane, sides and hopper;
- supporting steel frame and adjustable inclination for height complete with rolling wheels;
- PVC belt with double stiff weft vulcanized in the conjunction;
- gearmotor mounted directly on the main driving shaft.

CONVEYOR BELT IL-30 DISCHARGING THE BRIQUETTES



TECHNICAL CHARACTERISTICS:

- painted steel frame with reinforced sturdy profiles;
- painted steel loading plane, sides and hopper;
- supporting anterior legs complete with rolling wheels and fixing brake;
- closed underneath but open at the back to unload the residuals;
- stud chain links complete with stops;
- gearmotor mounted directly on the main driving shaft.

CONVEYOR BELTS

CONVEYOR BELT IL-330/A LOADING THE SHREDDER OR THE BRIQUETTING PRESS



TECHNICAL CHARACTERISTICS:

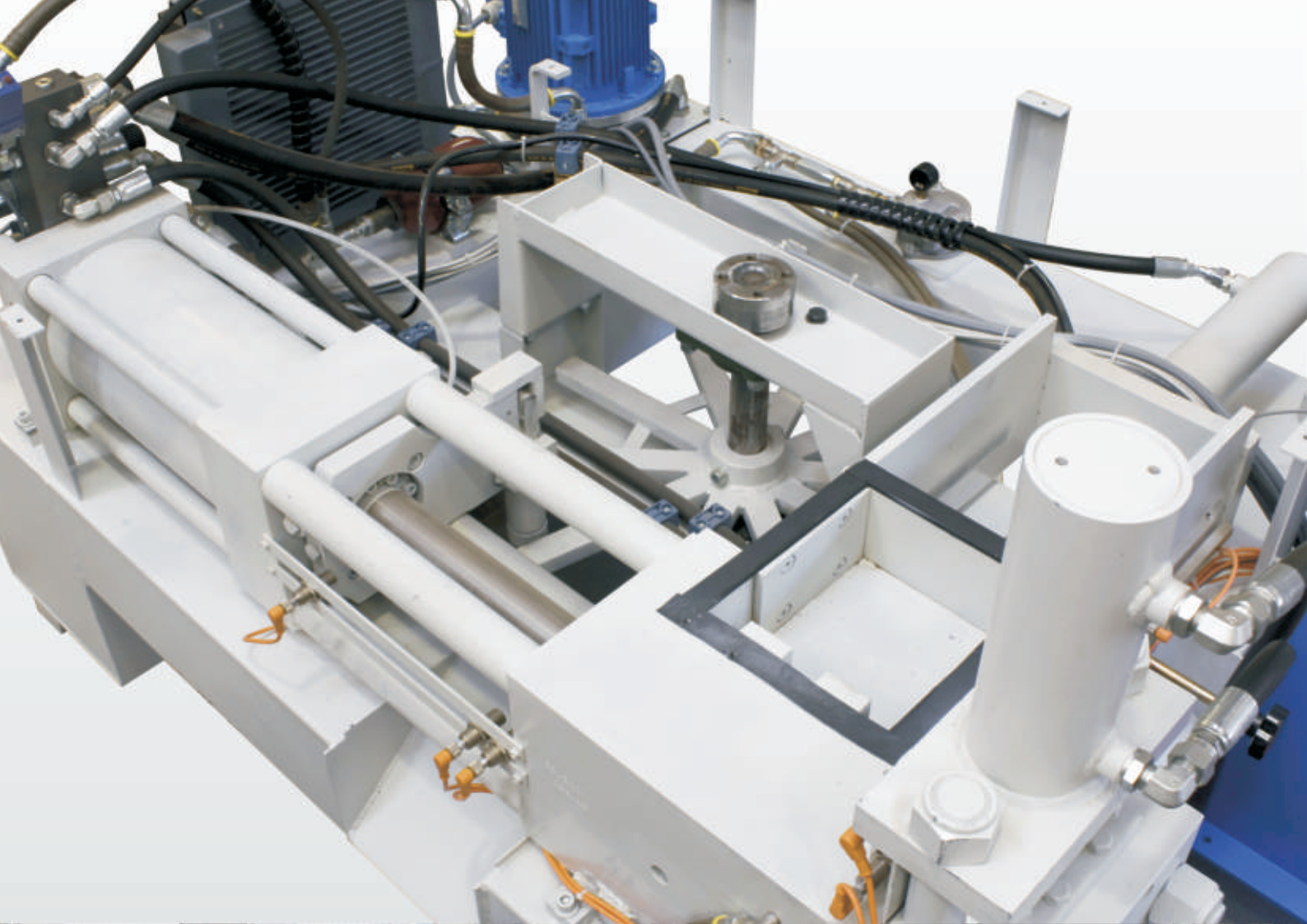
- wide material loading hopper;
- painted steel frame with reinforced sturdy profiles;
- anterior supporting legs complete with pins;
- rear supporting wheels;
- welded steel guides for side chains;
- painted steel sides and loading hopper;
- stud chain links complete with stops;
- gearmotor mounted directly on the main driving shaft.

CONVEYOR BELT IL-330/B LOADING THE BRIQUETTING PRESS



TECHNICAL CHARACTERISTICS:

- painted steel frame with reinforced sturdy profiles;
- anterior supporting legs complete with pins;
- rear supporting wheels;
- welded steel guides for side chains;
- painted steel sides and loading hopper;
- stud chain links complete with stops;
- gearmotor mounted directly on the main driving shaft.



TECHNICAL DATA

BRIQUETTING PRESS METALPRESS 150

Production	Kg/H	50/100	*
Briquette	Ø mm	60	
Motor power	Kw/Hp	7,5/10	
Max. motor power installed	Kw/Hp	8,50/12	
Voltage	Volt/Hz	400/50	
Briquette's cylinder	Ø mm	150	
Press power rate	Kg/cm ²	ca.1000/1250	
Box cylinder	Ø mm	50	
Round chips' container (internal dimension)	Ø mm	1000	
Dimensions of the briquetting press	L mm	1350	
.....	H mm	1485	
.....	W mm	1680	
Weight	Kg	1100	

BRIQUETTING PRESS METALPRESS 400

Production	Kg/H	100/400	*
Briquette	Ø mm	70	
Motor power	Kw/Hp	9,3/12,5	
Max. motor power installed	Kw/Hp	10/14	
Voltage	Volt/Hz	400/50	
Briquette's cylinder	Ø mm	190	
Press power rate	Kg/cm ²	ca.1500/1800	
Box cylinder	Ø mm	70	
Round chips' container (internal dimension)	Ø mm	1200	
Dimensions of the briquetting press	L mm	1360	
.....	H mm	1500	
.....	W mm	1980	
Weight	Kg	1400	

BRIQUETTING PRESS METALPRESS 800

Production	Kg/H	300/800	*
Briquette	Ø mm	80	
Motor power	Kw/Hp	15/20	
Max. power installed	Kw/Hp	36,5/50	
Voltage	Volt/Hz	400/50	
Briquette's cylinder	Ø mm	250	
Press power rate	Kg/cm ²	ca.1800/2300	
Box cylinder	Ø mm	70	
Round chips' container (internal dimension)	Ø mm	1200	
Dimensions of the electrical control board	L mm	900	
.....	H mm	1400	
.....	W mm	580	
Weight	Kg	83	
Dimensions of the air/oil exchanger	L mm	610	
.....	H mm	945	
.....	W mm	340	
Weight	Kg	62	
Dimensions of the briquetting press	L mm	1720	
.....	H mm	1650	
.....	W mm	2885	
Weight	Kg	3800	

ACCESSORIES ON DEMAND FOR BRIQUETTING PRESSES

LEVEL FEELER WITH PHOTOCELLS
 INSPECTION DOOR
 LUBRICATION UNIT with 3 nozzles (for 150-400)
 LUBRICATION UNIT with 5 nozzles (for 800)
 ANTIFREEZING DEVICE
 COLLECTING PAN FOR WATER/OIL complete with level feeler
 ELECTROPUMP FOR PAN COMPLETE WITH ELECTRICAL PLANT AND TIMER
 SPECIAL VOLTAGES

SHREDDER METALTRITO 40

Production	Kg./H	150-300	*
Gearmotors' motor power installed	Kw/Hp	5,5+5,5/7,5+7,5	
Voltage	Volt/Hz	400/50	
Cutter shafts	nr.	2	
Hardened cutters	nr.	20	
No. average cutter revs./min.	nr.	18	
Conveyor shafts	nr.	2	
conveyor disks	nr.	20	
Dimensions of the grinding hopper	L mm	400	
.....	W mm	800	
Dimensions of the shredder	L mm	2140	
.....	W mm	900	
.....	H mm	2420	
Weight	Kg	1400	

SHREDDER METALTRITO 80

Production	Kg./H	250-400	*
Gearmotors' motor power installed	Kw/Hp	7,5+7,5/10+10	
Voltage	Volt/Hz	400/50	
Cutter shafts	nr.	2	
Hardened cutters	nr.	30	
No. average cutter revs./min.	nr.	18	
Conveyor shafts	nr.	2	
conveyor disks	nr.	30	
Dimensions of the grinding hopper	L mm	600	
.....	W mm	800	
Dimensions of the shredder	L mm	2500	
.....	W mm	950	
.....	H mm	2420	
Weight	Kg	1600	

ACCESSORIES ON DEMAND FOR SHREDDER METALTRITO 40 AND METALTRITO 80

FRAME ON DEMAND
 CHANGEABLE LOADING HOPPER
 GEAR OR SERRATED CONVEYOR DISKS
 CHANGEABLE SCREEN
 SPECIAL VOLTAGES

CONVEYOR BELT IL-15 DISCHARGING THE BRIQUETTES

Gearmotor's motor power installed	Kw/Hp	0,18/0,25
Voltage	Volt/Hz	400/50
Sides	H mm	80
Speed	mt/min.	7,7
Dimensions of the conveyor belt	L mm	2200
Min. H	H mm	800
Max. H	H mm	1350
	W mm	210
Weight	Kg	62

CONVEYOR BELT IL-30 DISCHARGING THE BRIQUETTES

Gearmotor's motor power installed	Kw/Hp	0,37/0,50
Voltage	Volt/Hz	400/50
Width of chain links	mm	5
Stops	H mm	30
Belt	L mm	290
Sides	H mm	80
Dimensions of the conveyor belt		
Plane part	H mm	500
Inclined 45° part	H mm	2000
Weight	Kg	85

CONVEYOR BELT IL-330/A LOADING THE SHREDDER OR THE BRIQUETTING PRESS

Gearmotor's motor power installed	Kw/Hp	1,2/1,63
Voltage	Volt/Hz	400/50
Width of chain links	mm	30
Stops	H mm	80
Belt	L mm	5450
Sides	H mm	300
Dimensions of the loading hopper	L mm	1260
	H mm	1050
Dimensions of the conveyor belt	H mm	2835
	W mm	1100
H for the discharging	H mm	2330
Width	L mm	492
Weight	Kg	460

CONVEYOR BELT IL-330/B LOADING THE BRIQUETTING PRESS

Gearmotor's motor power installed	Kw/Hp	1,2/1,63
Voltage	Volt/Hz	400/50
Width of chain links	mm	30
Stops	H mm	80
Belt	L mm	5450
Sides	H mm	300
Dimensions of the conveyor belt	H mm	2330
	W mm	1100
H for the discharging	H mm	1700
Width	L mm	475
Weight	Kg	445

ACCESSORIES ON DEMAND FOR CONVEYOR BELTS

LEVEL FEELER FOR STOP AND START
 LOADING HOPPER ON DEMAND
 COLLECTING PAN FOR OIL
 ELECTROPUMP FOR PAN COMPLETE WITH ELECTRICAL PLANT
 MAGNETIC DEFERIZER
 SPECIAL VOLTAGES



CO.MA.FER. MACCHINE S.p.A. has the right to make technical and aesthetic modifications to its products at any time without notice and is not liable for any mistakes in the descriptive content of this catalogue.

Excellent Made in Italy



Wuxi Storm Technology Co., Ltd
Room 504, Changjiang Road No.21-1, New District
Wuxi City, Jiangsu Province, China
Tel:0510-85222260 Fax:0510-85214798
Mail:info@stormmach.com

Official dealer